

# BUSBAR SUPPORTS



MRM **PROCOM**<sup>®</sup> Pvt. Ltd.  
An ISO 9001:2008 Certified Organization



## Busbar Supports

### INTRODUCTION:

The Bus Bar System Insulators has been designed for a variety needs in Electrical Panels, Switch Boards and Electrical Distribution Panels and Bus Bar trunkings. The Raw Material has designed and formulated by PROCOM to have good electrical and Mechanical properties, Non-Hygroscopic, self- extinguishing and excellent behaviour even when used on polluted environment. PROCOM bus bar supports are designed, manufactured and Quality tested to meet International standards. The product us manufactured by using Raw material of Fiber Reinforced Plastics such as the Sheet.

Molding Compound(SMC) and the Dough Molding Compound(DMC),specially formulated by PROCOM raw material division to be a suitable for use in very rugged environment conditions.

#### ■ STAND OFF INSULATORS

- Conical type insulators
- Hexagonal type insulators

#### ■ FINGER TYPE SUPPORTS

- One way type supports
- Two way type supports
- Three way type supports
- Four way type supports

#### ■ L-TYPE SUPPORT

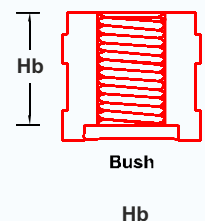
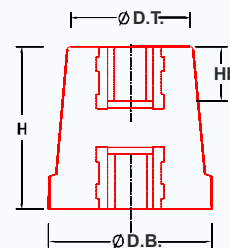
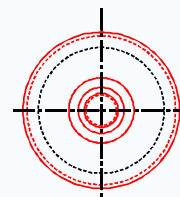
#### ■ NEUTRAL LINK WITH DMC PAD SUPPORTS

#### ■ TERMINAL CONNECTOR

- Double Pole Connector
- Tripple Pole Connector
- Four Pole Connector

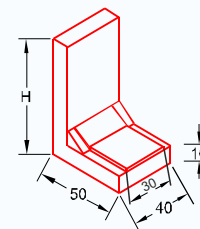
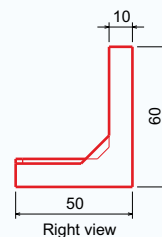
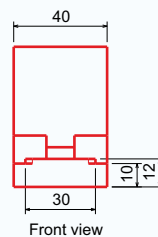
#### BUS BAR SUPPORT CONICAL

PRODUCT CODE	INSERT	DIMENSION IN MM			
		D.T.	D.B.	H	Hb
BIC-25-5	M5	19	25	25	10
BIC-25-6	M6	19	25	25	10
BIC-30-6	M6	25	30	30	10
BIC-35-8	M8	28	35	35	12
BIC-40-8	M8	40	33	40	12
BIC-45-8	M8	33	40	45	12
BIC-50-10	M10	40	50	50	17
BIC-60-10	M10	40	50	60	17
BIC-70-10	M10	40	50	70	20
BIC-60-12	M12	40	50	60	20
BIC-70-12	M12	40	50	70	20



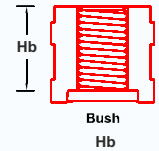
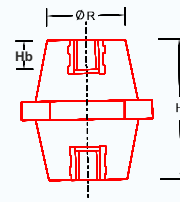
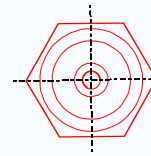
#### L-TYPE SUPPORT

PRODUCT CODE	HEIGHT(H) MM
PRO-ML-60	60
PRO-ML-85	85
PRO-ML-105	105
PRO-ML-125	125
PRO-ML-150	150



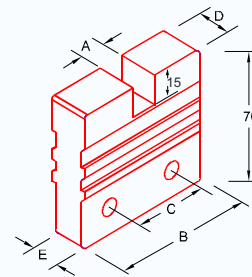
**BUS BAR SUPPORT HEXAGONAL**

PRODUCT CODE	INSERT	DIMENSION IN MM			
		D.T	D.B	H	Hb
BIH-25-6	M6	19	25	25	10
BIH-30-6	M6	25	30	30	10
BIH-30-8	M8	25	30	30	10
BIH-40-8	M8	40	33	40	12
BIH-40-10	M10	33	40	40	17
BIH-50-10	M10	40	50	50	17
BIH-60-10	M10	40	50	60	17
BIH-60-12	M12	40	50	60	17



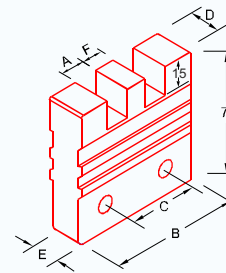
**ONE WAY FINGER SUPPORT**

PRODUCT CODE	BUS BAR SIZE	DIMENSION IN MM				
		A	B	C	D	E
PRO-M-106-W	6 MM x1 BAR	7.0	60	32	14	10
PRO-M-110-W	10 MM x1 BAR	11.2	60	32	14	10
PRO-M-112-W	12 MM x1 BAR	13.2	60	32	14	10
PRO-M-106-K	6 MM x1 BAR	7.0	70	40	20	16
PRO-M-110-K	10 MM x1 BAR	11.2	70	40	20	16
PRO-M-112-K	12 MM x1 BAR	13.7	70	40	20	16
PRO-M-116-K	16 MM x1 BAR	18	70	40	20	16
PRO-M-118-K	18 MM x1 BAR	20	70	40	20	16
PRO-M-120-K	20 MM x1 BAR	22	70	40	20	16
PRO-M-124-K	24 MM x1 BAR	26	70	40	20	16
PRO-M-106-T	6 MM x1 BAR	7	70	40	25	20
PRO-M-110-T	10 MM x1 BAR	11	70	40	25	20
PRO-M-170-T	70 MM x1 BAR	72	130	80	25	20



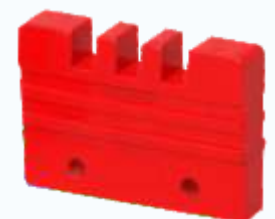
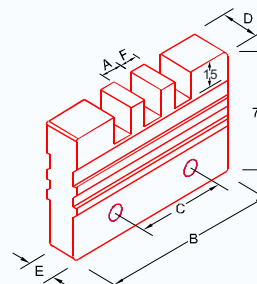
**TWO WAY FINGER SUPPORT**

PRODUCT CODE	BUS BAR SIZE	DIMENSION IN MM					
		A	B	C	D	E	F
PRO-M-206-W	6 MM x 2 BAR	7.0	60	32	14	10	5.5
PRO-M-210-W	10 MM x 2 BAR	11.2	60	32	14	10	9
PRO-M-212-W	12 MM x 2 BAR	13.2	60	32	14	10	11
PRO-M-206-K	6 MM x 2 BAR	7.0	70	40	20	16	5.5
PRO-M-210-K	10 MM x 2 BAR	11.2	70	40	20	16	9
PRO-M-212-K	12 MM x 2 BAR	13.7	70	40	20	16	11
PRO-M-206-T	6 MM x 2 BAR	7.0	70	40	25	20	5.5
PRO-M-210-T	10 MM x 2 BAR	10.8	70	40	25	20	9.6



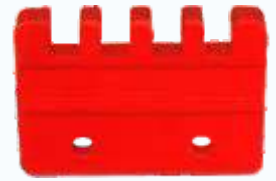
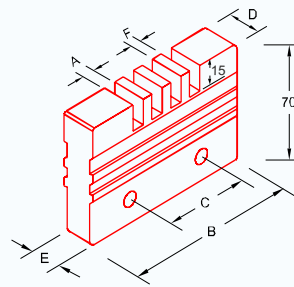
**THREE WAY FINGER SUPPORT**

PRODUCT CODE	BUS BAR SIZE	DIMENSION IN MM					
		A	B	C	D	E	F
PRO-M-306-W	6 MM x 3 BAR	7.0	70	32	14	10	5.5
PRO-M-310-W	10 MM x 3 BAR	11.2	80	50	14	10	9.5
PRO-M-312-W	12 MM x 3 BAR	13.2	90	50	14	10	11.5
PRO-M-306-K	6 MM x 3 BAR	7.0	70	40	20	16	5.5
PRO-M-310-K	10 MM x 3 BAR	11.2	100	50	20	16	9
PRO-M-312-K	12 MM x 3 BAR	13.7	100	50	20	16	11
PRO-M-306-T	6 MM x 3 BAR	7.0	70	40	25	20	5.5
PRO-M-310-T	10 MM x 3 BAR	11	100	50	25	20	9.5



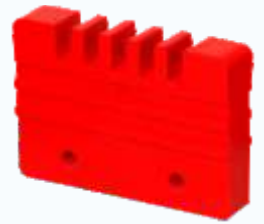
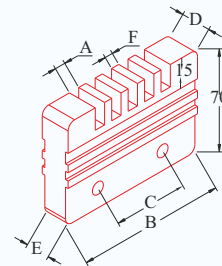
**FOUR WAY FINGER SUPPORT**

PRODUCT CODE	BUS BAR SIZE	DIMENSION IN MM					
		A	B	C	D	E	F
PRO-M-406-W	6 MM x 4 BAR	7.0	80	50	14	10	5.5
PRO-M-410-W	10 MM x 4 BAR	11.2	90	50	14	10	9.5
PRO-M-412-W	12 MM x 4 BAR	13.2	90	50	14	10	11.5
PRO-M-406-K	6 MM x 4 BAR	7.0	100	50	20	16	5.5
PRO-M-410-K	10 MM x 4 BAR	11.2	100	50	20	16	9
PRO-M-412-K	12 MM x 4 BAR	13.7	130	80	20	16	11
PRO-M-410-KS	10 MM x 4 BAR	11.5	130	80	19	14	9.7
PRO-M-412-KS	12 MM x 4 BAR	14	130	80	19	14	11.7
PRO-M-406-T	6 MM x 4 BAR	7.0	130	80	25	20	5.5
PRO-M-410-T	10 MM x 4 BAR	11.2	130	80	25	20	9.6
PRO-M-412-T	12 MM x 4 BAR	13.4	130	80	25	20	16.6



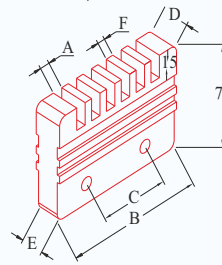
**FIVE WAY FINGER SUPPORT**

PRODUCT CODE	BUS BAR SIZE	DIMENSION IN MM					
		A	B	C	D	E	F
PRO-M-506-K	6 MM x 5 BAR	7.0	100	50	20	16	5.5
PRO-M-506-T	6 MM x 5 BAR	7.4	100	50	25	20	5.5



**SIX WAY FINGER SUPPORT**

PRODUCT CODE	BUS BAR SIZE	DIMENSION IN MM					
		A	B	C	D	E	F
PRO-M-606-K	6 MM x 6 BAR	7.0	100	50	20	16	5.5
PRO-M-606-T	6 MM x 6 BAR	7.6	100	50	25	20	5.5



**NEUTRAL LINK WITH DMC PAD**

PRODUCT CODE	PRODUCT CODE	L	B	H
NEUTRAL LINK 32A	PRO-NL-32A	58	15	13
NEUTRAL LINK 63A	PRO-NL-63A	78	20	15
NEUTRAL LINK 100A	PRO-NL-100A	102	27	20

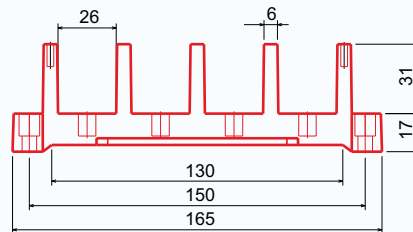


**POWER TERMINAL**

PRODUCT NAME	PRODUCT CODE
TRIPPLE POLE TERMINAL 63 Amp	PRO-TP-63A
FOUR POLE TERMINAL 63 Amp	PRO-TPN-63A
TRIPPLE POLE TERMINAL 100 Amp	PRO-TP-100A
FOUR POLE TERMINAL 100 Amp	PRO-TPN-100A
DOUBLE POLE TERMINAL 63 AMP	PRO-DP-63A



Top view

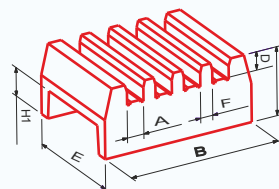


Front view



**BUS BAR SUPPORT VERTICAL**

PRODUCT CODE	BUS BAR SIZE	DIMENSION IN MM								
		A	B	C	D	E	F	H	H1	
PRO-VBS-0406	6 MM x 4 BAR	7.5	67	19	8	50	5.5	30	12.5	
PRO-VBS-0410	10 MM x 4 BAR	11.5	95	19	10	50	9	32	12.5	



## Technical Specification

PROPERTIES	UNITS	TEST METHODS	VALUES	
			SMC	DMC
<b>PHYSICAL</b>				
SPECIFIC GRAVITY	-	D-792	1.7	1.9
GLASS CONTENTS	%	N/A	25	15
WATER CONTENTS (24 Hrs)	%	D-570	0.2	0.15
<b>MECHANICAL</b>				
TENSILE STRENGTH	Kgf/cm <sup>2</sup>	D-638	700	400
FLEXURAL STRENGTH	Kgf/cm <sup>2</sup>	D-790	1550	900
IMPACT STRENGTH IZOD	J/m	D-265	600	250
COMPRESSIVE STRENGTH	Kgf/cm <sup>2</sup>	D-695	1800	1500
<b>ELECTRICAL</b>				
DIELECTRIC	(KV/mm)	D-149	12	10
COMPARATIVE	(Volts)	BS-5901	+600	+600
ARC RESISTANCE	(Secs.)	D-495	+180	+180
<b>FLAMMABILITY INDEX</b>	-	UL-94	Self Extinguishing	V-0

### TOLERANCE CHART

DIM (MM)	TOLERANCE (±)
1-15	0.25 mm
16-50	0.5 mm
51-100	1.0 mm
101-250	1.5 mm
250 & above	2 mm

THE ABOVE VALUES ARE FOR THE STANDARD FORMULATION FOLLOWED FOR COMPANY. WE HAVE FACILITIES FOR MANUFACTURING SMC & DMC ACCORDING TO THE CUSTOMER REQUIREMENTS.

(SMC = SHEET MOULDING COMPOUND)  
(DMC = DOUGH MOULDING COMPOUND)